

ENDURA™ EQUIPPED QUICKLIFT

LIGHT, COMPACT CRANES
EQUIPPED FOR SERVICE



▪ COMPACT ▪ LIGHTWEIGHT ▪ LIFT UP TO 2250KG ▪ 3 YEAR STRUCTURAL WARRANTY

About us

Our development of Quicklift® compact cranes has been driven by years of operating a variety of utes & trailers mounted with lightweight hiab cranes in a variety of industries. We've combined this with feedback from fellow New Zealanders about their specific service requirements.

Quicklift® cranes have a remarkable power-to-weight ratio and are designed to safely equip your team of people for the unique New Zealand environment within a range of industries including civil, utilities, construction, service and agriculture.

“We use Quicklift to save us a lot of heavy lifting, even the oldies can now shift hives again. Quicklift has proved to be exactly what we want in a crane for a small truck and trailer unit - light, compact, trouble free and easy to use. We all love it!”

Russell Berry
Managing Director
Arataki Honey

Key Benefits of Quicklift® Cranes

- ✓ **Safety**
We're leaders in advanced crane technology, incorporating the latest innovation and functionality for improved productivity and safety.
- ✓ **Ease of Operation**
Powerful yet smooth operation whether you use vehicle-mounted controls or remote.
- ✓ **Compact Stow**
Compact foot print (including an optional base frame that's designed to be hidden under the deck) and ultra-compact stowing position allow you to optimise space use around the crane.
- ✓ **Custom Fitting**
Fitting options for light trucks, utes, agricultural equipment and boats.
- ✓ **Power to Weight ratio/Payload**
Low power demand and low tare weight give you more fitting options, lower running costs and greater payload.
- ✓ **Extensive range**
Wide range of models to suit a variety of applications, kit set installation system and a selection of accessories means you can tailor a package to suit your specific lifting and vehicle requirements.

Quicklift® cranes offer an exceptionally high payload due to our innovative lightweight design.



SAFE, COMPACT & LIGHTWEIGHT

The Little Lifter

A compact unit for specialist uses, available as one simple package

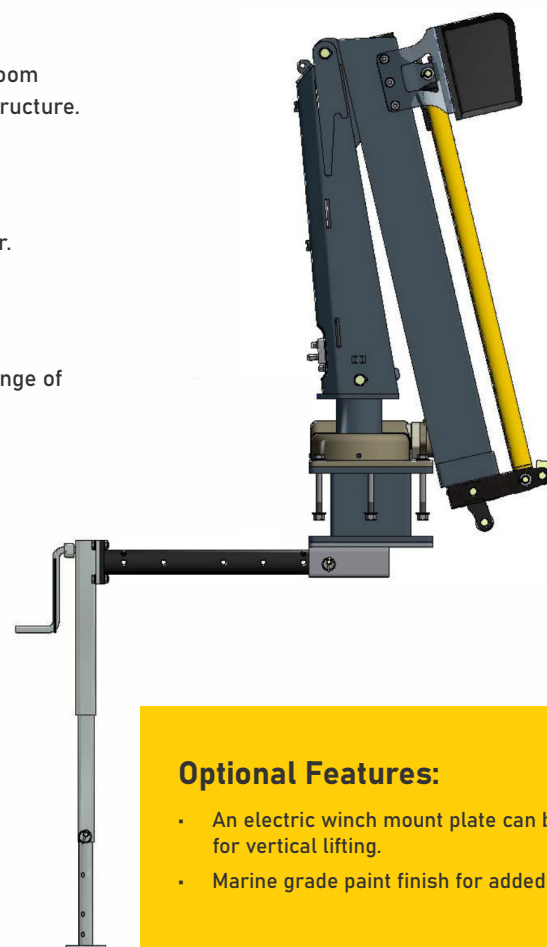
Package includes:

- Fully hydraulic crane
- Hydraulic slew
- Hydraulic lift
- Hydraulic crane reach giving you a max reach of 2.9m
- Manual crane reach giving you a max reach of 3.8m
- Base plate, leg socket, x1 manual leg
- Bolt down kit
- Power pack (oil tank, pump & motor)
- Cordless radio remote, allowing single speed and single acting
- Safety overload relief system on lifting cylinder



Features:

- 01 Teflon wearing pads reduce friction on hydraulic boom extensions, increasing the life span of the crane structure.
- 02 Grease nipples to ensure long pin life.
- 03 High grade paint system for industrial protection.
- 04 Overload relief system to ensure safety of operator.
- 05 Adjustable slew rotation stopper.
- 06 High grade zinc plated pins.
- 07 Crane leg mounted on swivel allows for greater range of fitting and under-deck stowing options.
- 08 Safety locking leash.
- 09 Hexagonal boom for maximum strength and lift capacity.
- 10 Fully adjustable manual extension of stabiliser leg allows for quick setup.
- 11 Base plate designed to be incorporated into your deck & sub frame, enabling you to optimise space and location of the crane fitting.



Optional Features:

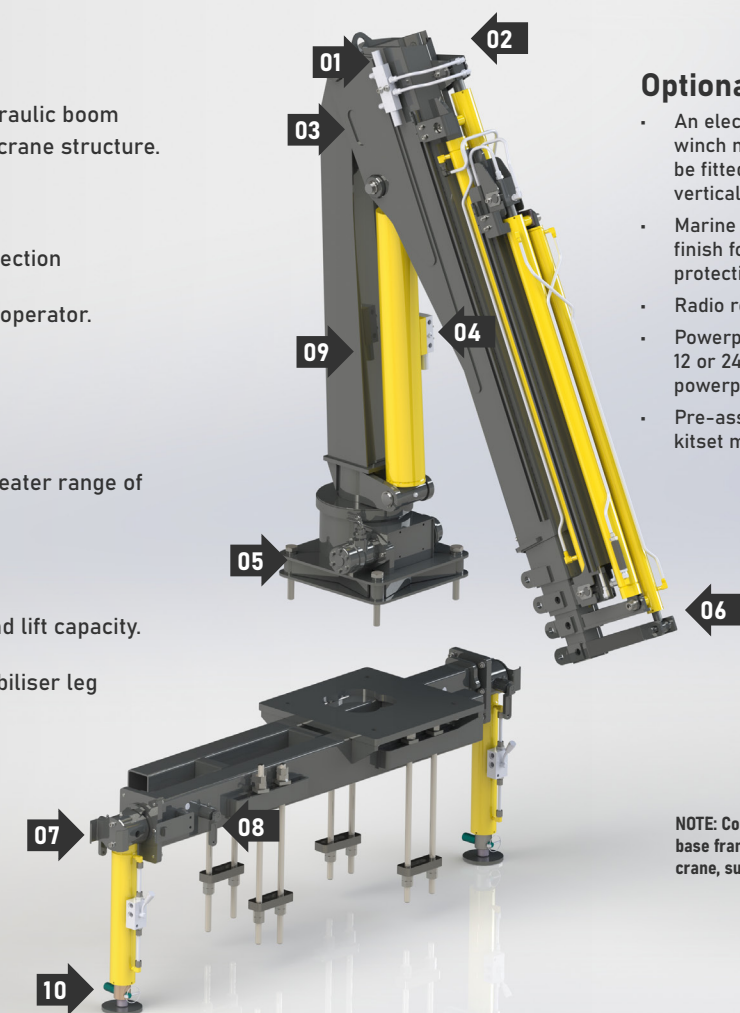
- An electric winch mount plate can be fitted to allow for vertical lifting.
- Marine grade paint finish for added protection.

Features:

- 01 Teflon wearing pads reduce friction on hydraulic boom extensions, increasing the life span of the crane structure.
- 02 Grease nipples to ensure long pin life.
- 03 High grade paint system for industrial protection
- 04 Overload relief system to ensure safety of operator.
- 05 Adjustable slew rotation stopper.
- 06 High grade zinc plated pins.
- 07 Crane leg mounted on swivel allows for greater range of fitting and under-deck stowing options.
- 08 Safety locking leash.
- 09 Hexagonal boom for maximum strength and lift capacity.
- 10 Fully adjustable hydraulic extension of stabiliser leg allows for quick setup.

Optional Features:

- An electric or hydraulic winch mount plate can be fitted to allow for vertical lifting.
- Marine grade paint finish for added protection.
- Radio remote control.
- Powerpack options include 12 or 24 Volt battery, petrol powerpack or PTO/pump.
- Pre-assembled or kitset mounting frame



NOTE: Controls, outriggers and base frame sold separately to the crane, subject to requirements.



Quicklift® 090

The Quicklift® 090 is an ultra-compact light weight crane that lifts up to 990kg. It is a perfect fit for utes and light trucks. Choose the set-up you need, from basic (crane with base plate and manual stabiliser leg only) through to a complete kitset which includes power pack and radio remote control.

Hydraulic Ultra Compact

990kg
Maximum Lift

3.40m
Maximum Reach



Quicklift® 150

The big lifter for utes, the Quicklift® 150 range is designed to get maximum lift from a ute or trailer mounted unit. The QL-150 lifts up to 1140kg and has a horizontal reach up to 4.3m with the QL-150-3+1 model. The standard 2 extension model can be extended with a selection of hydraulic and manual extensions.

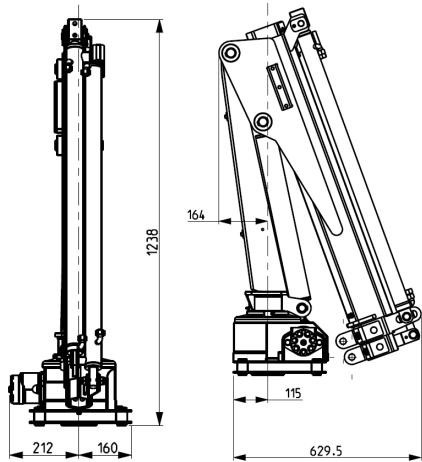
Hydraulic Compact

1140kg
Maximum Lift

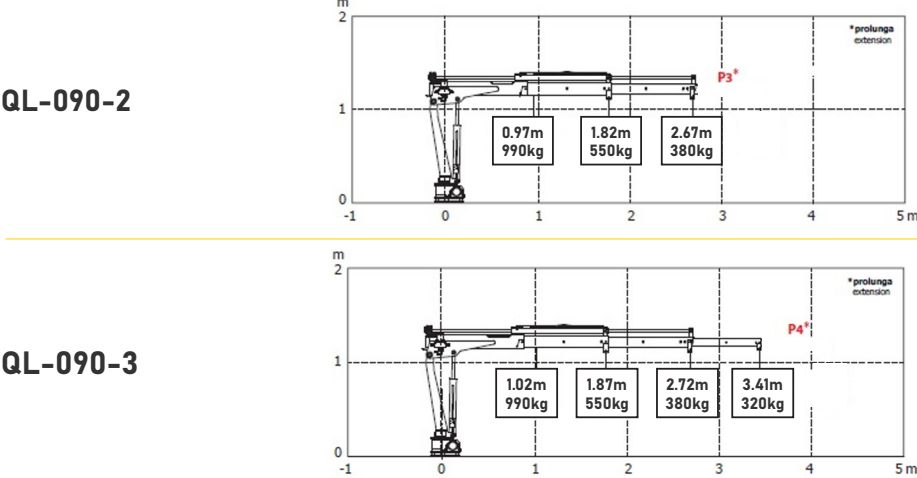
4.30m
Maximum Reach



Dimensions



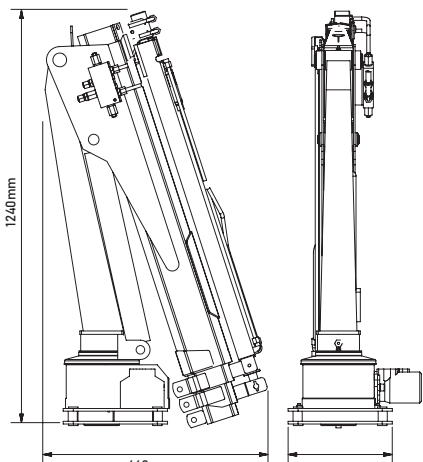
Lifting & Reach Capacities



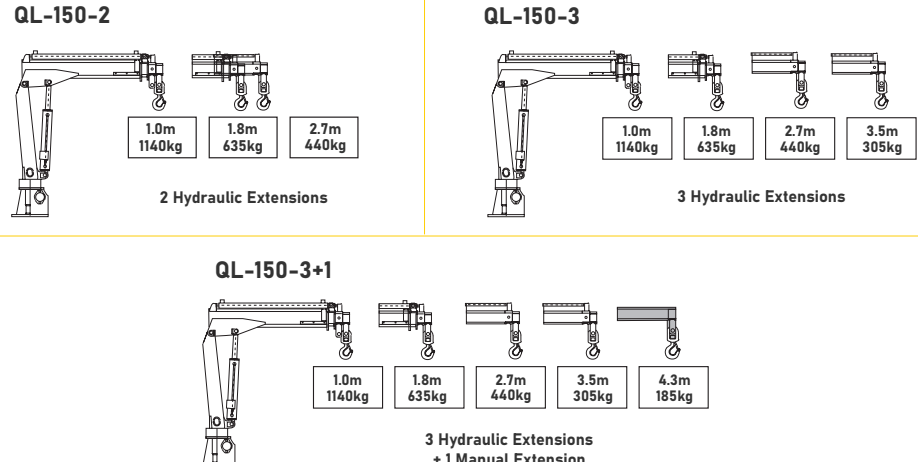
Quicklift 090 Model Specifications

T/M:	0.85	Max hyd. lift:	990kg	Base frame weight:	35kg	Mounting space:	0.31m
Distance at max. lift:	920	Max reach with manual ext:	3.4m	Stowed crane height:	1.225m		
Max lift:	990kg	Max lift with manual ext:	320kg	Stowed crane length:	0.695m		
Max hyd. reach:	2.67m	Standard crane weight:	135kg	Radio controlled:	Inc		

Dimensions



Lifting & Reach Capacities



Specifications

Size T/M:	1.20	Weight at max. hyd. reach:	305kg	Base frame weight:	80kg	Radio controlled:	Optional
Max. lift:	1140kg	Max reach:	4.3m	Stowed crane height:	1.24m	Mounting spaces:	0.31m
Distance at max. lift:	1.00m	Weight at max. reach:	185kg	Stowed crane length:	0.66m		
Max. hyd. reach:	3.50m	Standard crane weight:	165-187kg	Stowed crane width:	0.31m		

Quicklift® 250

The Quicklift® 250 range is the preferred choice for many light trucks and seed drill operators, and is also popular on small work boats.

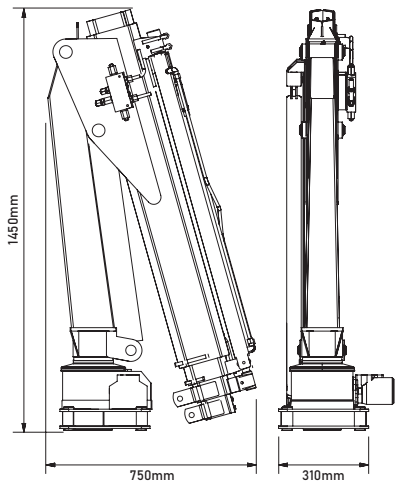
Hydraulic Compact

1800kg
Maximum Lift

5.10m
Maximum Reach

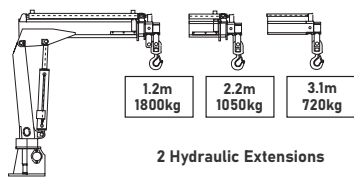


Dimensions

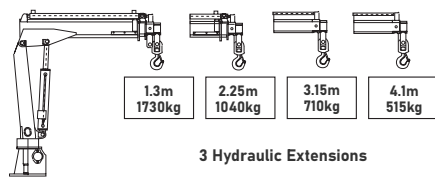


Lifting & Reach Capacities

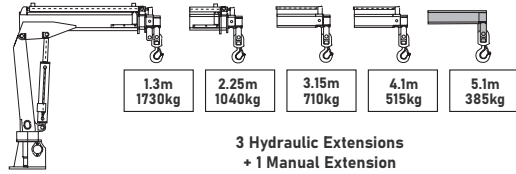
QL-250-2



QL-250-3



QL-250-3+1



Specifications

Size T/M:	2.30	Weight at max. hyd. reach:	515kg	Base frame weight:	80kg	Radio controlled:	Optional
Max. lift:	1800kg	Max reach:	5.10m	Stowed crane height:	1.45m	Mounting spaces:	0.31m
Distance at max. lift:	1.20m	Weight at max. reach:	385kg	Stowed crane length:	0.75m		
Max. hyd. reach:	4.10m	Standard crane weight:	226-245kg	Stowed crane width:	0.31m		

Quicklift® 350

Our big lifter, the Quicklift® 350 is a proven serious lifting performer on many light trucks, seed drills and small fishing and work boats plus a range of other applications. The QL-350 lifts up to 2200kg and has a horizontal reach up to 6.7m with the QL-350-4+1 model. The standard 2 extension model can be extended with a selection of hydraulic and manual extensions.

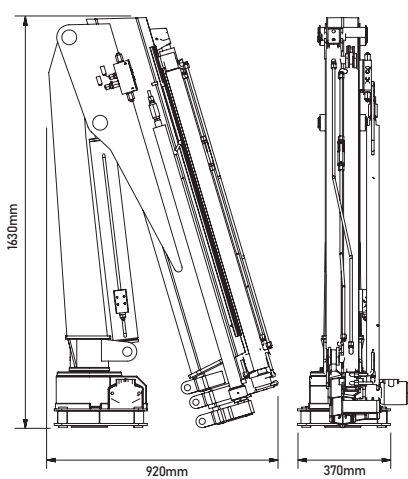
Hydraulic Compact

2200kg
Maximum Lift

6.70m
Maximum Reach

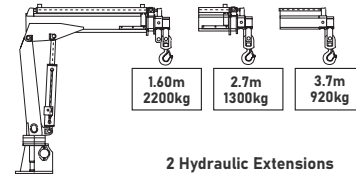


Dimensions:

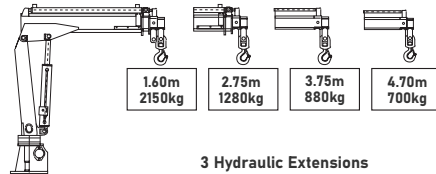


Lifting & Reach Capacities:

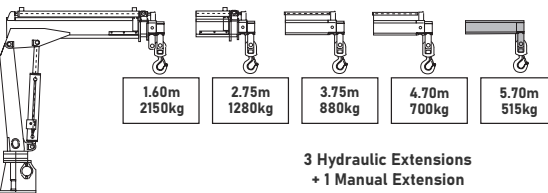
QL-350-2



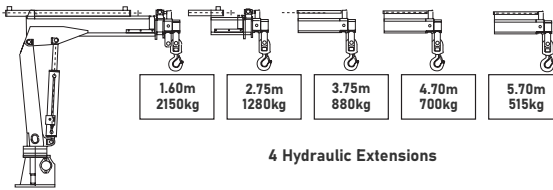
QL-350-3



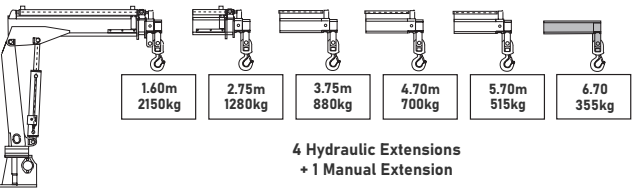
QL-350-3+1



QL-350-4



QL-350-4+1



Specifications:

Size T/M:	3.20	Weight at max. hyd. reach:	515kg	Base frame weight:	105kg	Radio controlled:	Optional
Max. lift:	2200kg	Max reach:	6.70m	Stowed crane height:	1.63m	Mounting spaces:	0.37m
Distance at max. lift:	1.60m	Weight at max. reach:	355kg	Stowed crane length:	0.92m		
Max. hyd. reach:	5.70m	Standard crane weight:	320-418kg	Stowed crane width:	0.37m		

Quicklift® 450

The Quicklift® 450 is the ideal model when you need a big lifter but have limited space and payload to work with. This model is ideal for class 2 trucks.

Hydraulic Compact
2250kg | **6.07m**
Maximum Lift | Maximum Reach



Accessories

Quicklift® Accessories



Electric and hydraulic winches



Hydraulic and manual stabiliser legs



Hydraulic and manual extension kits



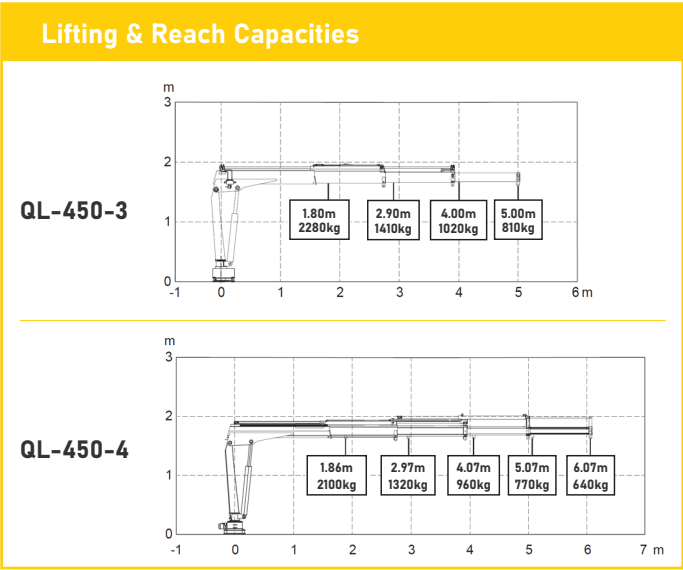
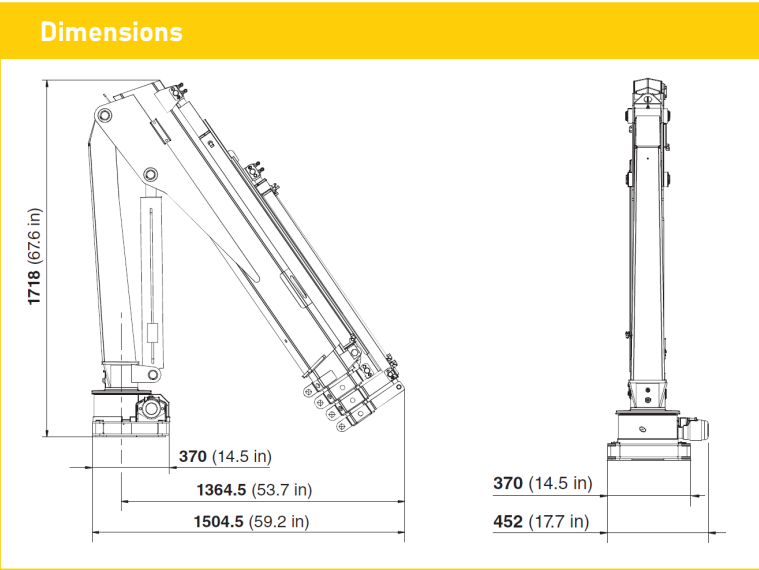
Basic and advanced remote-control systems



Vehicle-mounted control units



Stabiliser pads



Specifications					
Size T/M:	3.9	Weight at max. hyd. reach:	640kg	Base frame weight:	125kg
Max. lift:	2,600kg	Max reach:	6.07m	Radio controlled:	Optional
Distance at max. lift:	6.07m	Weight at max. reach:	640kg	Stowed crane height:	1.718m
Max. hyd. reach:	6.07m	Standard crane weight:	350kg	Stowed crane length:	1.504m
				Stowed crane width:	0.45m
				Mounting spaces:	370mm



Lifting attachments



Marine grade paint finish

“When our company found we needed a smaller Quicklift® crane for one of our utes, Endura Equipped were very helpful in assisting with our enquiry. Supply was undertaken promptly and the unit is now installed and working well for us. Thank you for your prompt and efficient service.”

- Paul & Julie Sergent, Rivercity Honey Ltd



**ENDURA™
EQUIPPED** **≡ QUICKLIFT**

0800 115 584

enduranz.co.nz

sales@enduranz.co.nz